

Veterans

MACV
Outreach, housing, financial assistance, CD/MI
218-722-8763, 5209 Ramsey St.
www.mac-v.org

St. Louis County Veterans' Services
Assistance with benefits, pension, burial
218-725-5285, 405 E. Superior St., Suite 130
www.stlouiscountymn.gov

Other

Age Well Arrowhead
Connecting older adults and caregivers with services
that support healthy aging and independence.
218-623-7800, 306 W. Superior St.
www.agewellarrowhead.org

First Witness Child Advocacy Center
Crisis counseling and advocacy services to children
and families
218-727-8353, 4 W. 5th Street
www.firstwitness.org

LSS Crisis Nursery
Parents who are facing a crisis and need help caring
for their children
218-302-6879
www.lssmn.org/crisisnursery

MinnesotaHelp.info
Brought to you by the State of Minnesota, strives to
connect people with services in their communities.
800-333-2433
www.minnesotahelp.info

Senior LinkAge Line
Free service which helps older adults and families to
find community services
1-800-333-2433
www.seniorlinkageline.com

Together for Youth
An inclusive, supportive and welcoming group for
LGBTQ youth; HIV testing and supplies
218-529-2224, 1422 E. Superior St.
www.lssmn.org

Duluth Public Library

520 W. Superior Street
Duluth, MN 55802
218-730-4200

Mt. Royal Branch Library

105 Mt. Royal Shopping Circle
Duluth, MN 55803
218-730-4290

West Duluth Branch Library

5830 Grand Avenue
Duluth, MN 55807
218-730-4280



Compiled by Duluth Public Library Staff

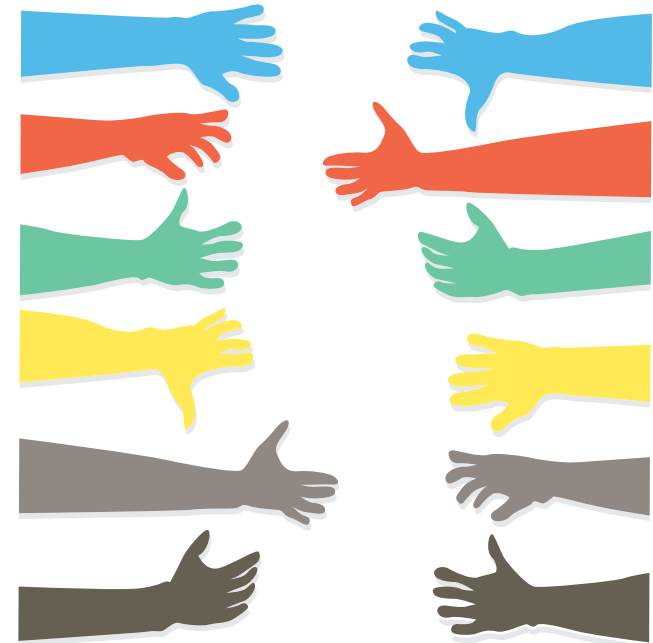
This is not meant to be an exhaustive list of social
services available in Duluth.
Duluth Public Library is not affiliated with any of these
organizations.

**DULUTH
PUBLIC
LIBRARY**
www.duluthlibrary.org

updated 8/2019

Do You Need Help?

Social Services in Duluth



For general information and referral
United Way: 2-1-1 or 1-800-543-7709
211.org
St. Louis County Triage Team:
218-733-2717

Shelter/Housing Adult

Text “Homeless” to 85511

American Indian Community Housing Organization
Emergency and long term housing for Native Americans
218-722-7225, or 218-722-2247 (Domestic Violence Shelter)
202 W. 2nd St.
www.aicho.org

Another Door Emergency Housing Program (Lutheran Social Services) Shelter for ages 18-24
218-529-2287
www.lssmn.org/youth/duluth/another-door

CHUM
Emergency shelter, showers, storage lockers, phones, laundry, connects persons with healthcare services, onsite nurse on some days
218-726-0153, 125 N. 1st Ave. W.
Deb Holman-Street Outreach Worker: 218-260-7573
www.chumduluth.org

HDC Homeless Project
Housing assistance for people with mental health issues
218-728-4491, 206 W 4th St, Suite 112
www.humandevlopmentcenter.org

Loaves and Fishes
Shelter for families with children, pregnant women, men's shelter (call first and ask for volunteer on duty), meals
218-724-2054 or 218-728-0629, 1614 and 1712 Jefferson St.
www.duluthcatholicwork.wixsite.com/loavesandfishes

Safe Haven
Emergency shelter for those who identify as a woman or nonbinary person and their children, assistance with protection orders and criminal court process
218-728-6481 (24 hr. crisis line)
www.safehavenshelter.org

Legal

Indian Legal Assistance
218-727-2881, 107 W. 1st St.
www.ilap-duluth.com

Legal Aid
General legal services program and the Senior Citizens Law Project
218-623-8100, 302 Ordean Bldg., 424 W. Superior St.
www.lasnem.org

Shelter/Housing Youth

Life House Youth Center
Crisis intervention, housing assistance, education, emergency shelter, drop-in center
218-722-7431, 102 W. 1st St.
www.lifehouseduluth.org

LSS Duluth Runaway & Homeless Youth Service
218-626-2726 (24 hr. crisis line)
www.lssmn.org

Meals

CHUM (see *Shelter/Housing Adult*)
Lunch: Tuesday & Thursday at 11:30

Damiano
Meals, clothing, household goods
218-722-8708, 206 W. 4th St.
Mon, Wed, Fri, Sat, and Sun: Breakfast: 8:30 – 9:30;
Lunch: 11:30 – 1:00; Dinner: 5:00 – 6:00 (Fri, Sat, and Sun only)
www.damianocenter.org

Salvation Army
Lunch, emergency food shelf, clothing vouchers for items at Thrift Store, other support of basic needs
218-722-7934, 215 S. 27th Ave. W.
Lunch Monday - Friday: 11:30 – 12:30
www.salvationarmynorth.org

Union Gospel Mission
Meals, food shelf, hygiene kits
218-722-1196, 219 E. 1st St.
www.duluth-ugm.org
Monday - Friday Breakfast: 7:30 – 8:15, Lunch: 12:00 – 12:45, Dinner: 5:00 – 5:45

Domestic and Sexual Abuse

Domestic Abuse Intervention Project
Nonviolence classes for men who have used violence in their relationship
218-722-2781, 202 E. Superior St.
www.theduluthmodel.org

PAVSA (Program for Aid to Victims of Sexual Assault)
Services include options for people who have been victimized, ranging from immediate crisis intervention to long-term counseling survivors
218-726-1931 (24 hr. crisis line)
218-726-1442, 32 E. 1st St., Suite 200
www.pavsa.org

Mental/Physical Health

Accend Services
Mental health services
Drop-in hours: Thurs. 8-10 am, 1-3 pm
218-724-3122, 101 W. 2nd St
www.accendservices.com

Birch Tree Center
Crisis services and residential facility where people can briefly stay when dealing with a mental health crisis
Mobile Crisis: 218-623-1800, Text “MN” to 741741
4720 Burning Tree Road
www.birchtreeduluth.com

Center for Alcohol & Drug Treatment
Detox, Outpatient and Residential treatment, Counseling
218-723-8444, 1402 E. Superior St.
www.cadt.org

Lake Superior Community Health Center
Medical, dental, mental health
218-722-1497, 4325 Grand Avenue
www.lschc.org

LSS Teen Health Center
Free wellness center for teens and young adults ages 13-24
218-733-1383, 1422 E. Superior St.
www.lssmn.org

RAAN
Needle exchange, Narcan, free AIDS testing
218-481-7225, 18 W. 1st St.
www.raan.org

St. Louis County Mental Health Intake: 218-355-1530

Substance Use Assessment: 218-720-1528

Suicide Hotline: 1-800-273-8255

